

Please check the focus!



LS

BBC HD

1080 lines

A landscape photograph showing a mountain range under a sky with a rainbow. The foreground is covered in autumnal vegetation, likely heather, in shades of orange and brown. The mountains in the background are rocky and have a similar color palette. The rainbow is a prominent feature in the sky, arching over the mountains.

News from o'er the water
a brief update from South Uist



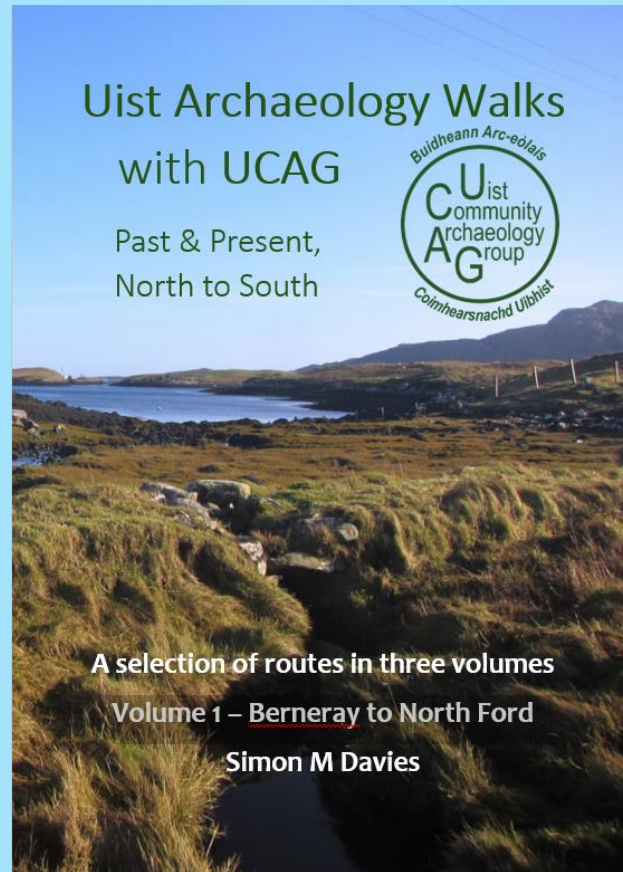
Not all storms come to disrupt your life;

Some come to clear your path.



Anon

News from o'er the water



The first volume of Uist Archaeology Walks, from Berneray to North Ford, has been a great success.

A second printing has been delivered...

... and sales continue to exceed expectations.

Work of volumes two and three was interrupted due to ill health in the Summer (not that we had one in Uist this year – temperatures in May seldom in double figures and no two consecutive dry days between June and end of August!



News from o'er the water



Two unrecorded stone features were noted near Baile Mhic' Phàil (Newton) on North Uist.

The first is a roughly dressed monolith, resting on bedrock and two earth-fast boulders. Nearby there are other roughly dressed stones and some Standing Stones on mounds.



The second stone resembles a grave marker at first glance – no inscription but repaired historically. A local source identified it as 'Clach an Uachdarain' [the Stone of the Landlord]. It was installed by the 'new laird' [Sir John Ord] as a meeting point with his factor who lived at the nearby Newton Lodge.

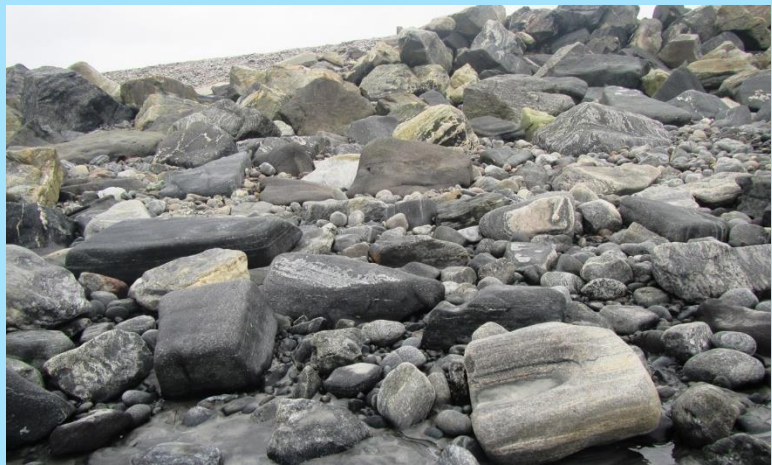
Both features have been reported to DES for 2025.

News from o'er the water – it's an ill wind 1



Two storms hit Uist between 18th & 21st October, coinciding with the highest Spring Tides of 2024.

The first was anonymous, from the South; the second, Storm Ashley, had a Westerly component. Together, they stripped sand from many beaches and caused erosion and disruption to the dunes.



The stripping of the sand revealed the quern stone at Baile Sear once again after it was hidden days after Storm Kathleen in April.

News from o'er the water – it's an ill wind 2



It also revealed a second saddle quern 50 metres to the North, first (and last) seen in 2016 (see SCAPE site #13367)



But it did almost destroy the narrow ash-line site possibly an Iron Age path of compacted peat-ash. (see SCAPE site #16904)

SCAPE Updates have been submitted



News from o'er the water – it's an ill wind 3



The southern Iron Age midden site was heavily eroded.

Many new midden artifacts were revealed both in situ and dislodged, now residing in the shingle bank



One of the new revelations is a circular ceramic feature – possibly the base of a broken vessel.

Sadly, after this was photo-recorded, the feature fell from its position and was lost in an overnight duneslip. (SCAPE site #9612)

SCAPE Updates have been submitted



News from o'er the water – it's an ill wind 4



The most exciting development was on the northern IA midden site. This site was, we thought, the position of two wheelhouses, with most of the masonry is resident on the beach shingle!
(SCAPE site #9609)



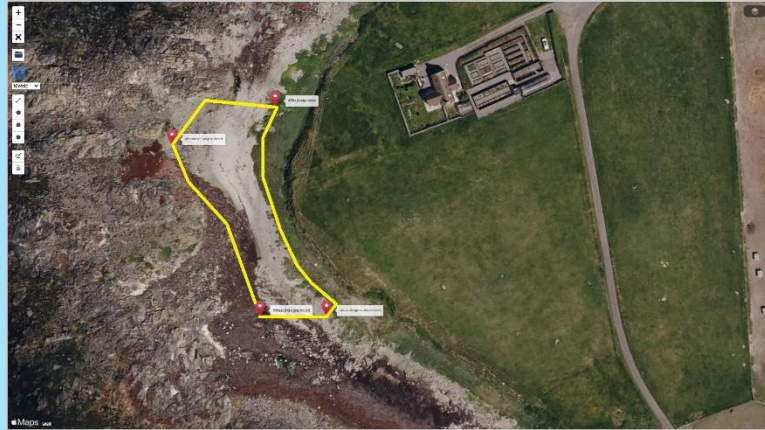
The storm action has revealed a large section of curved wall, thought probably a 'new' wheelhouse still in situ, as abandoned, in the dune. Maybe some philanthropic donor will want it to be excavated...

Large quantities of animal bones, teeth and antler were released into the shingle fringes, along with pottery sherds.

SCAPE Updates have been submitted



News from o'er the water – it's an ill wind 5



Perhaps the biggest surprise was the appearance of another extensive intertidal peat area with Willow tree remains embedded – probably Neolithic or Bronze Age in date, similar to the Liniclate site. (SCAPE site #9609)

The site is marked on the Apple Satellite image with w3w reference points at the ‘corners’



Large quantities of timber are embedded in the peat surface, identified by its distinctive red colour when first exposed and confirmed by microscopy.

The site has been reported to DES for 2025.

A SCAPE Update has been submitted

News from o'er the water – and the future?



My post-inoculation brain fog is starting to clear, so work is ongoing (slowly) on Volumes 2 & 3 of the Uist Archaeology Walks, hopefully for 2025...



News of a significant large unrecorded timber wreck has been shared with me by the finder. At present he is reluctant to make the site widely known, but it is on the Atlantic coast of South Uist and only accessible at extreme low Spring Tides, and then only for minutes. Plans are afoot to consider options for survey in ultra calm conditions by snorkel survey! (I can hold my breath for ages!)



Thank you

Please, feel free to contact me
email simonmdavies@hotmail.com
or WhatsApp me on 17740365072